



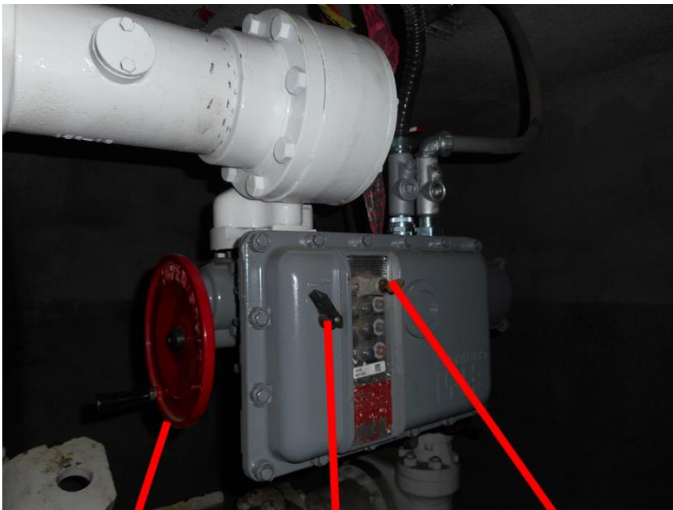
**US Army Corps
of Engineers**
Engineering and Support Center,
Huntsville

Safety Office

Mishap Lessons Learned



Subject: Lockout/Tag out (LOTO)



Manual Wheel

Electrical on/off switch

Key to on/off
Electrical Component

Lever to motor/Manual Switch

Event: Lock out tag out (LOTO) on the main supply valve to Tank 18 was incorrectly performed. A contract worker was attempting to LOTO a valve with a chain, but was informed by the Government Designated Authority (GDA) that the valve could still be operated remotely from the pump house, which was not in the line of sight of the supply valve. The chain that the contract worker placed on the valve could easily be removed by hand without unlocking and if the valve was operated remotely it would have sheared off the small handle that the chain was wrapped around.

Root Cause(s):

- Lack of Supervision
- Lack of Training/Coordination with the Local Base.

Recommendations:

- Use proper supervision
- Review lockout/tag out plan and procedures
- Contract the local facility for local lockout/ tag out procedures
- Use the proper tools