

NOTES
 See FAC-A-01 and FAC-E-01 for additional requirements
 Use 1/2" thick AR500 steel plate for 7.62mm and below. Additional protection is required for larger caliber weapons

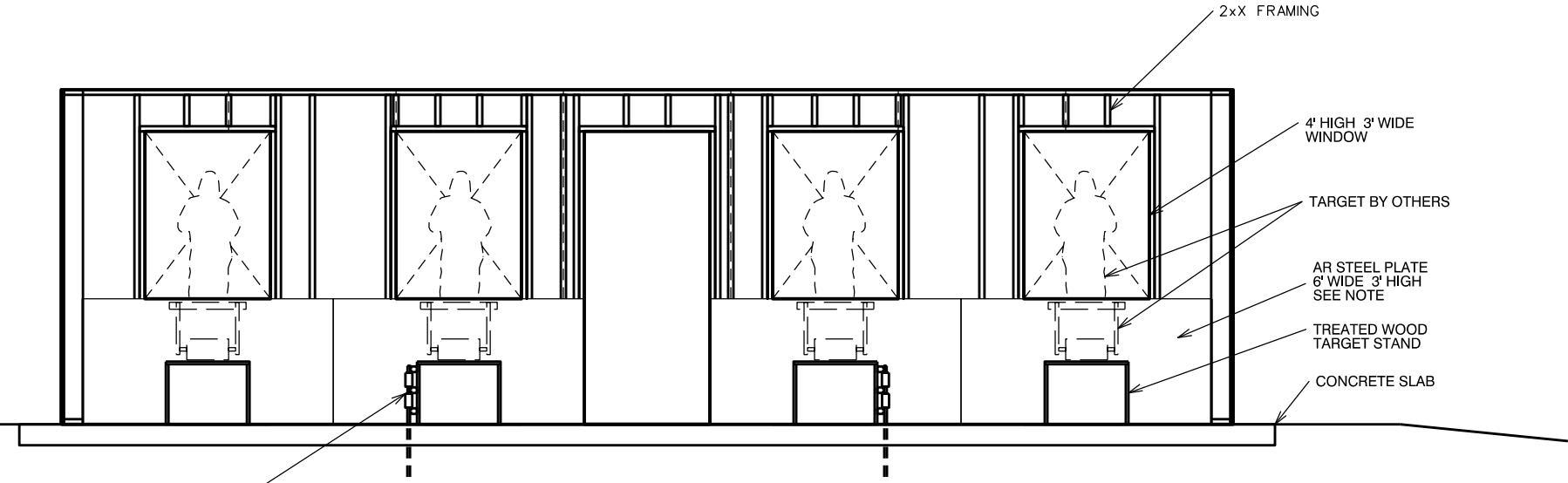
Rev.	Date	Description

Designed by:	Date:	Rev.:
Drawn by:	Design file no.:	
Reviewed by:	Drawing code:	
Submitted by:	File name:	
	Plot date:	
	Plot scale:	

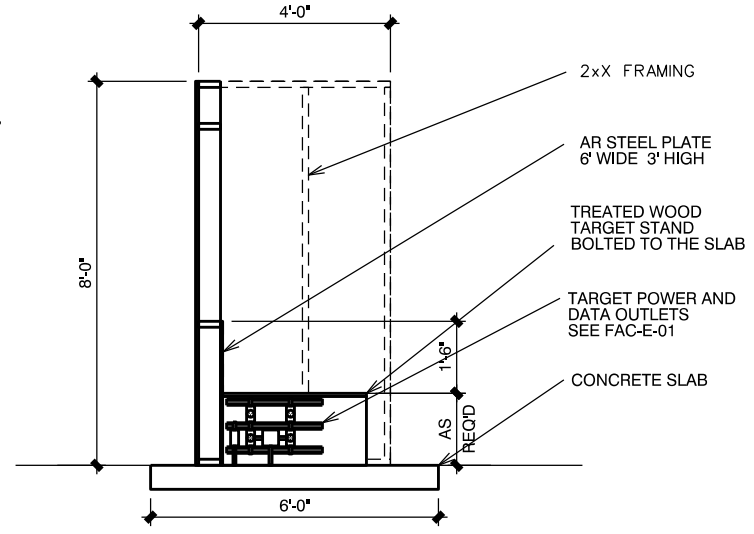
U. S. ARMY ENGINEERING AND SUPPORT CENTER, HUNTSVILLE HUNTSVILLE, ALABAMA
JANUARY 2015

RANGE AND TRAINING LAND PROGRAM STANDARD DESIGN MANUAL
FACADE DETAILS

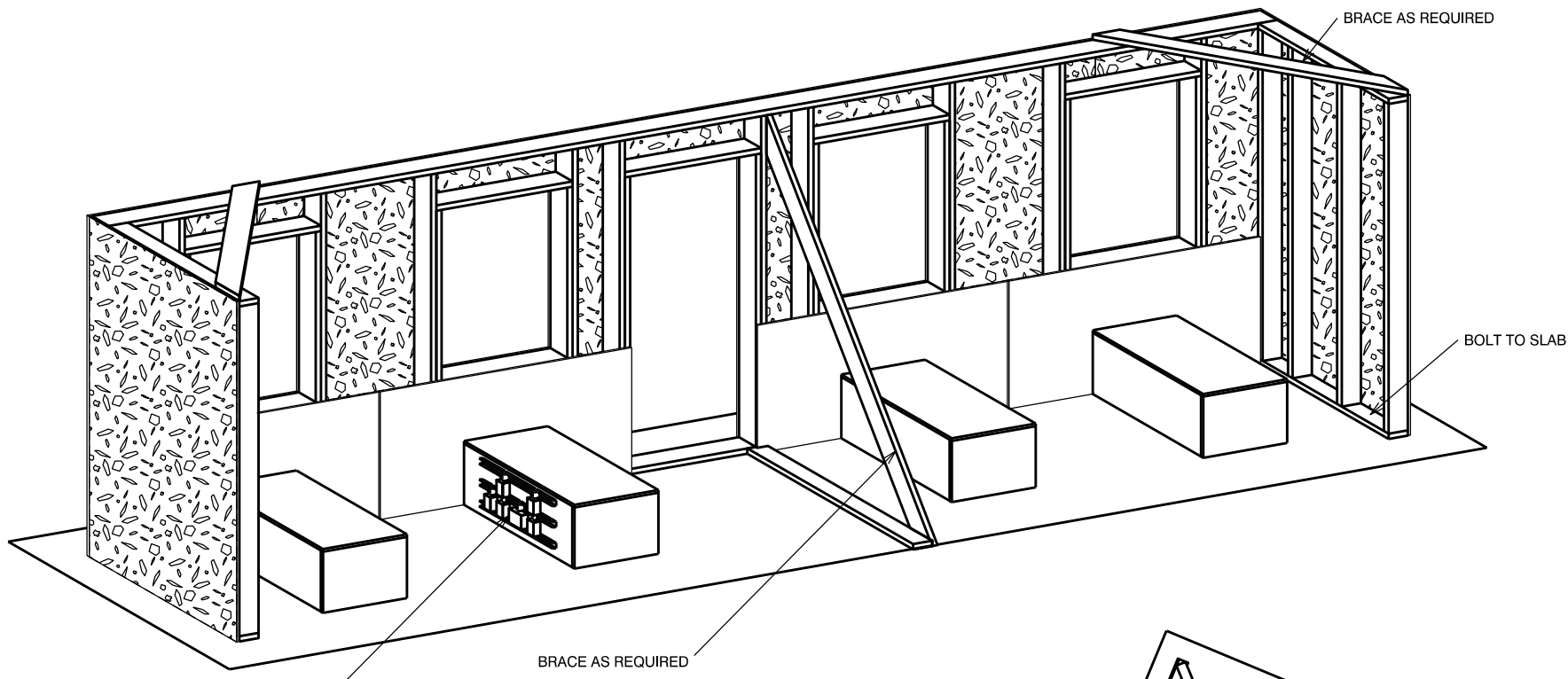
Sheet reference number:
FAC-A-02



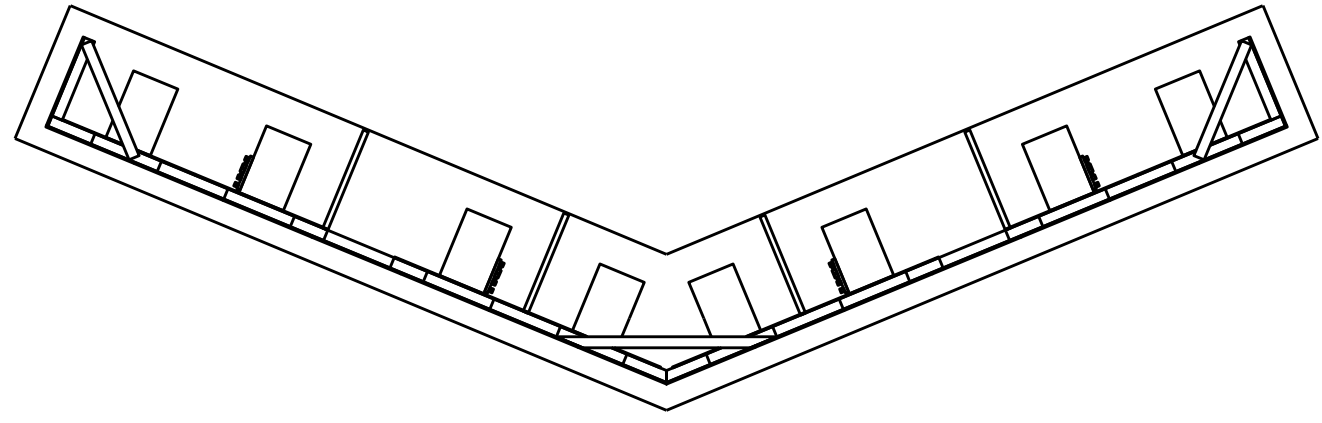
REAR ELEVATION
 NOT TO SCALE



SECTION VIEW
 NOT TO SCALE



REAR ISOMETRIC
 NOT TO SCALE



V-VERSION PLAN
 NOT TO SCALE

